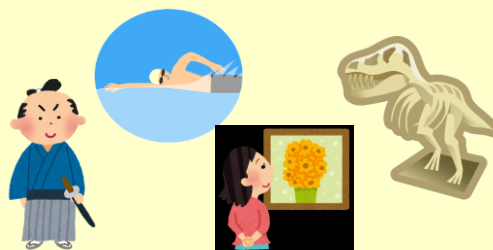


# Toyohashi Furusato Passport Manual

## 《Dear exchange students》

The "Toyohashi Furusato Passport" enables you to visit a number of facilities within Toyohashi for free (up to 10 times). As our future ambassadors between your home country and the city of Toyohashi, we would like to invite you all to visit various facilities here in hopes that each of you will use this opportunity to further learn and become a fan of our city and to form lots of connections and friendships.

- Target: exchange students living in Toyohashi
- Valid until: **March 31, 2026**
- Facilities you can visit: See back of this manual



## < How to use the Toyohashi Furusato Passport >

- ★ On the Toyohashi Furusato Passport, please write down your name and the name of the university you are attending.
- ★ When visiting a facility, present your student ID and the Toyohashi Furusato Passport to the reception. You, as well as up to one friend, may enter for free.

### Important !









- The passport cannot be used by anyone but the exchange student themselves.
- You cannot enter the facility for free without your student ID.
- You cannot lend or give your passport away to others.
- You cannot use the passport after the expiry date or after it has been used 10 times.

### Share your experiences with others!

- ★ Please visit our various facilities and share what you found interesting or entertaining on your social networks for your friends to see!
- ★ We hope that all exchange students will exchange information about the great things you can find here in Toyohashi, and by doing so, that it will encourage more people to be interested in Toyohashi.



## ★ Facilities where you can use your Toyohashi Furusato Passport ★

Facilities	Description
<b>① Nonhoi Park</b> Address: Toyohashi Ooiwa-cho Aza Ooana 1-238 TEL : 0532-41-2185 HP : <a href="https://www.nonhoi.jp/">https://www.nonhoi.jp/</a> 	A large park that combines a zoo and a botanical garden. You can use the passport once to enter both areas. * You may not use the passport to enter when there are special events going on e.g. Night garden.
<b>② Re-spa Toyohashi</b> Address: Toyohashi Higashi Nananema-chi Aza Houjidou 10 TEL : 0532-38-5151 HP: <a href="https://information.konamisportsclub.jp/trust/re-spa-toyohashi/">https://information.konamisportsclub.jp/trust/re-spa-toyohashi/</a> 	You can use the pools and baths heated from the burning process of garbage or the training room.
<b>③ Toyohashi Museum of Natural History</b> Address: Toyohashi Ooiwa-cho Aza Ooana 1-238 TEL : 0532-41-4747 HP : <a href="https://www.toyohaku.gr.jp/sizensi/">https://www.toyohaku.gr.jp/sizensi/</a> 	The museum exhibits dinosaur skeletons and fossils. There are a number of attractions such as a documentary showing on a large screen, and special exhibits, which you can use your passport for.
<b>④ Toyohashi Art Museum</b> Address: Touohashi Imahashi-cho 3-1 TEL : 0532-51-2882 HP: <a href="https://www.toyohashi-bihaku.jp/">https://www.toyohashi-bihaku.jp/</a> 	You can view the current exhibit you're your passport for free. Please check the website for the yearly schedule of exhibits.
<b>⑤ Futagawa Honjin-shuku Museum</b> Address: Toyohashi Futagawa-cho Aza Nakamachi 65 TEL : 0532-41-8580 HP : <a href="https://futagawa-honjin.jp/">https://futagawa-honjin.jp/</a> 	A museum you can learn about travel and traffic in the Edo Period. You can visit the honjin and hatagoya, both of which were inns in the Edo period.
<b>⑥ Coco nico</b> <b>※Closed because of construction. From September 1<sup>st</sup> 2025 to May 31<sup>st</sup> 2026.</b> Address: Toyohashi Matsuba-cho 3-1 TEL : 0532-21-5525 HP : <a href="https://coconico.jp/">https://coconico.jp/</a> 	You can enter the Machi-kuukan, an area equipped with activities aimed to pique the interest of young minds
<b>⑦ Aquarena</b> Address: Toyohashi Jinnoshinden-cho Aza Menowari 1-3 TEL : 0532-31-4781 HP : <a href="https://www.hamada-sports.com/toyohashi/">https://www.hamada-sports.com/toyohashi/</a> 	An indoor pool in the summer, an ice skating rink in the winter. The passport will enable you to enter for free. *there is a cost for renting skating shoes.
<b>⑧ Toyohashi Planetarium</b> Address: Toyohashi Oiwa-cho Aza Hiuchizaka 19-16 TEL : 0532-41-3330 HP : <a href="https://www.toyohaku.gr.jp/chika/">https://www.toyohaku.gr.jp/chika/</a> 	Here is the science education facilities with a planetarium and many participation type exhibits. The planetarium is free.

### 【Questions regarding facilities】

For details, please contact the facilities directly



Toyocky, the mascot of Toyohashi city

### 【Questions regarding the passport】

Toyohashi International Association  
 Address: 2<sup>nd</sup> floor, emCAMPUS EAST 2-81 Ekimae-odori,  
 Toyohashi  
 TEL: 0532-55-3671 ✉: [tia@tia.aichi.jp](mailto:tia@tia.aichi.jp)

Follow us→



TIA553671